



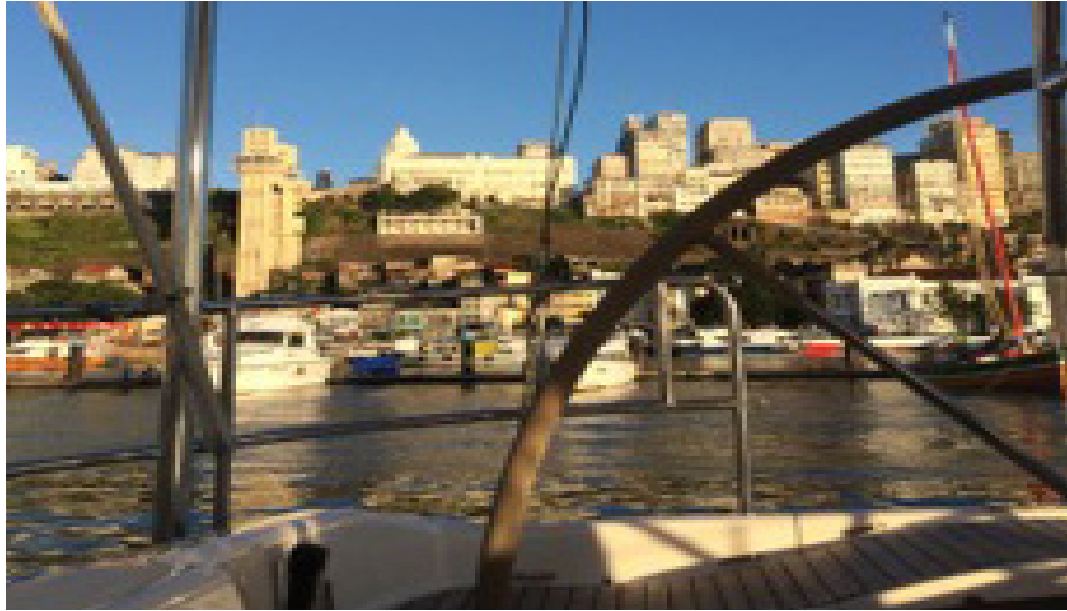
Name: E2

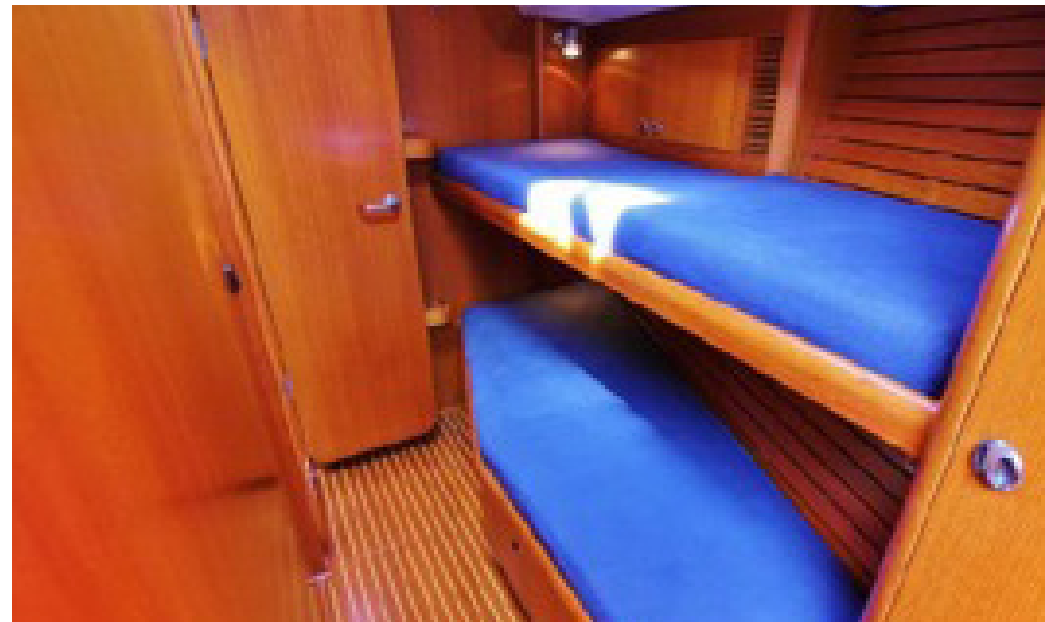
Type: 48-123 (Three Cabin Version)

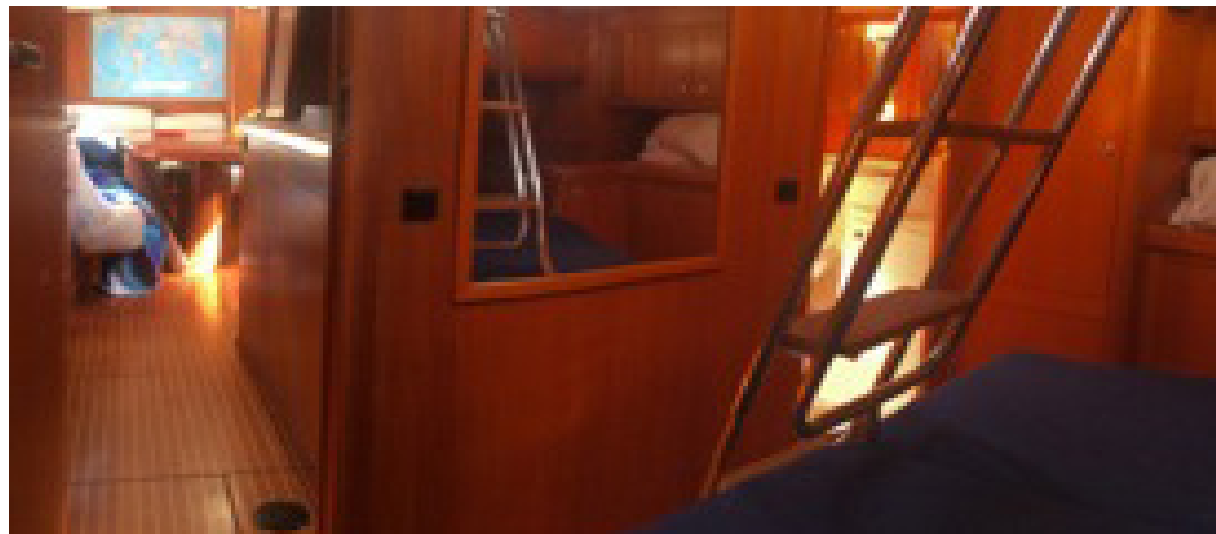
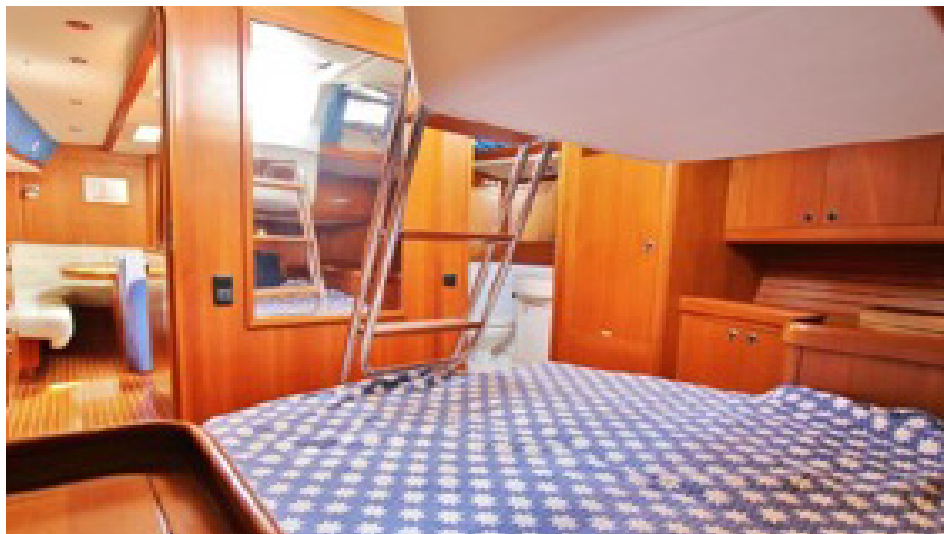
Year: June 1998

Lying: Raiatea, French Polynesia

Asking Price: €395,000 - Vat Paid







Name: E2      Type: 47      Year: 1998      Lying: Raiatea, French Polynesia      Asking Price: €395,000 - Vat Paid

Length:	15.09m	49'50"
Length of Waterline:	12.50m	41'01"
Beam:	4.32m	14'17"
Draft:	2.46m	8'07"
Displacement:	16,450kg	36,260lbs
Ballast:	5,500kg	12,125lbs
Construction Material:	GRP	
Engine:	Volvo Penta TMD 22 (70 Hp)	
Tanks:	Fuel 410Lt	Water 430Lt
Electrical System:	DC 24V : AC 230V	
Designer:	German Frers	
Mast & Boom:	Nautor Aluminium mast with conventional boom	
Delivered:	June 1998	
Flag:	Germany	
Hull Colour:	White	

## HULL & APPENDAGES

The hull is of single skin construction using glass/aramid hybrid fibre reinforced vinylester laminate

A high proportion of the fibres are unidirectional, giving a stiff laminate with excellent strength and fatigue properties.

Structural bulkheads are of honeycomb and laminated to hull and deck.

Stiffener flanges are unidirectional lay-ups over foam cores.

Engine beds are of GRP with steel inserts.

Topside colour is white, boot top and cove stripe are dark blue gel coat.

Bathing platform swim ladder to be a combined bathing/side boarding

Shore power intakes through a small hatch in port side of the transom for the cables with the connection in the lazarette.

Antimony cast lead ballast keel

The mast is stepped through deck onto a mast step with movable shoe for mast rake adjustment

Steering Systems

The rudder is in GRP made in core foam

Wheel steering, destroyer type, covered in elkhide

## DECK

Teak laid deck is made in GRP sandwich construction, 9 mm teak glue with vacuum bag system

Teak toerail

Electric windlass

Stainless lifelines with gates amidships on both sides

Pulpit of the open type and equipped with a teak seat

The pushpit incorporates a gate for the bathing platform - socket for the flagpole - Auxiliary engine support Deck fittings for spinnaker pole

Aluminium mast collar bolted through deck for secure support of mast

Stemhead fitting of stainless steel with two chain rollers

Deck shower, hot and cold water

#### Deck Equipment

Windless (revised 2014) remote control in the cockpit

N 1 anchor CQR 75 lb

N 1 anchor Fortress FX-37

Stainless steel protection for anchor CQR

Anchor mounted on stemhead: CQR 45 and one CQR 28kg

Chain m 80 lewmar, diameter 10 mm, grade 40

#### Winches

Winches (all revised 2014) are Lewmar Ocean Series Wavespring (A = Aluminium ST = Self-tailing E = Electric

3 lewmar 64 AEST

1 Lewmar 64 AST

1 lewmar40 AST

1 lewmar 16 AST

1 lewmar 48 AEST

2 Lewmar 48 AST

#### INTERIOR

##### General

Teak with hand rubbed satin finish is used for all visible woodwork

Foam cored floorboards with laid teak veneer

Roller blinds/mosquito screens for hinged deck hatches from 0.5 m width upwards Drawers

are secured with latches

Wooden companionway ladders with non-slip steps

#### Master Cabin (Aft)

Double central berth, drawers under both berths

GRP cockpit linings, finished in a light colour with textured surface

Vanity Desk

Shelf with lockers over each side, full-length hanging locker

Chubb safe in hanging locker

#### Heads

Cameo White Corian washbasin and surfaces

Lockers, Mirror, telephone type shower and bulkhead mounted shower head.

Shower curtains for all heads except owner's head.

White GRP lining to half-height

Tiles on floor

Large bowl Par WC

#### Galley

Stainless steel ,three-burner Force 10 gas stove with oven and grill, with fiddles and gim-balled Extractor hood over stove

Micro-wave oven Siemens HF 13553 230V

50Hz inox

Drawers for utensils

GRP Garbage bin

Iceberg fridge and freezer run on engine and

230V

Work area each side of stove in Corian Cameo White. Double stainless steel sinks

Seawater spout with foot pump

Drip dry locker

#### Main Cabin

Teak table with door below for bottles

“L” shaped settee portside with 2 chairs on centerline

Settee/cuccetta to starboard

Lockers and bookshelf to starboard above set-tee

Teak cover on mast in saloon

Stereo/CD/cassette player

#### Nav Station

Chart stowage under tabletop

Double navigator's seat

Drawers under the table

#### Guest Cabin

Upper and lower berths and hanging lockers forward

Starboard cabin with pull out lower berth and wider than standard upper berth

Lockers outboard of upper berth

2 Drawers under lower berths

Small shelves by the head of each berth

#### ENGINE & SYSTEMS

Volvo Penta Model TMD 22 - 70 HP installed on

a flexible support with gear box MS2A reduction 3.01:1 Drip tray integral with engine base-ment

Engine area sound insulated with fire-proof material according to Solas B-15

Fuel capacity 410 litres in 2 stainless steel tanks with level gauges on engine control panel

Max Prop 3 blade propeller 570 mm diameter

#### Plumbing Systems

Hot and cold pressurized water for galley and heads.

Water capacity 430 litres in 2 stainless steel tanks with level gauges

Water heater 22 litres capacity

Filler tap on deck. Vents for water tanks on galley sinks

Seawater foot pump for galley sinks

Watermaker Sea Recovery SRC 600 AED engine driven

Fridge and freezer Iceberg run on engine and 220 V

Drinking water purifier, Jabsco 1077-9000

#### Ventilation System

Heating system Eberspacher D5W for aft cabin, main cabin, guest cabin and head

#### Drainage System

Two manual bilge pumps, one below, one in cockpit, emptying through sea cocks above waterline Electric bilge pump Volvo SBP750 manual and automatic control

Visible and acoustic alarm for water in bilge

#### ELECTRICAL SYSTEM

##### DC System

12 V DC for engine starting

24 V DC for service

One battery set 24 V 400 Ah for general service  
Engine starter battery 90 Ah, 12 V, under settee in main cabin

Spreader deck lights

Tricolour lights on masthead

Red dome night-lights in galley and over chart table

Ceiling lights Cantalupi "Tony"

##### AC System

230 V AC, three wire electrical system

Shore power supply 230 V

##### Chargers/Inverters

Battery charger 50 A

Alternator on the engine 100 Ah 28 V

Inverter Mass 24/1500 and commuter

#### ELECTRONIC SYSTEMS

##### Navigation Instruments

Navigational instruments Brookes & Gatehouse – Hercules 2000, PK-1 3 Jumbo 20/20 on mast

3 Digital FFD repeaters

2 Analogic repeaters 360°

1 analogic repeater 45°

Compass Super Halcyon 3 and moving card 215-HL.142

Barometric pressure sensor

Standard C Trimble Galaxy Inmarsat –C/GPS

Radar Furuno 841

Autopilot Autohelm ST 7000

New Furuno NavNet Electronics in 2008:

- Furuno NN3D Multifunction display at Chart table
- Furuno NN3D Multifunction display at helm
- Furuno 4Kw Radar antenna
- GPS Antenna GP-320 B
- AIS FA-30 ship monitoring system with interface
- Navtex FAX -30 interfaced to NavNet system
- FAX-5 Preamplifier
- MAX SEA MULTILAYER Chartplotting software
- Electronic Compass Furuno PG 500

#### Computer Systems

Computer Transas NAVI-Sailor - 1 repeater at navigation and 1 repeater on steering wheel pedestal

#### Communications Systems

VHF Shipmate 8300 at chart table and handset in cockpit,

SSB Icom IC M710



## Entertainment Systems

Stereo/CD - Sony XR C550 RSD , CD Sony CDX 7

## MAST & RIGGING

Aluminium triple spreader masthead rig supported by babystay, runners, checkstays  
 Running rigging, babystay and checkstays and innerforestay in aramidic fibre  
 Standing rigging of solid Navtec rod  
 Reckmann RS 2000/30 headsail furler including blocks and clutch  
 Harke track for fully batten mainsail  
 Lazy jacks  
 One spinnaker pole  
 one jockey pole  
 One bow-sprit  
 Navtec hydraulic system with control unit in cockpit for backstay, babystay and boom vang

## EQUIPMENT

### General Equipment

Sprayhood over entrance hatch  
 Sprayhood over forward end of aft cockpit  
 Bimini  
 Cockpit table  
 Upholstery for deck, cockpit

### Safety Equipment

Automatic fire extinguisher in engine area, NAF S III, 1 Kg, with remote control Flame failure

protection on burners Gas shut-off cock adjacent to stove – Remote controlled shut-off and leak detector near gas bottle with control switch and warning light in galley.

## SAILS

### Racing (Olympics, August 2008) – (Storage in Italy)

Sail	Meter	Construction	Material/Notes
<b>MAINSAILS One Reef</b>	64	Space	Full Carbon
<b>GENOA #1 Medium</b>	82	Space	Full Carbon

<b>LP 150%</b>			
<b>GENOA #1 Heavy LP 140%</b>	79	Space	Full Carbon
<b>GENOA #3 LP 100%</b>	56	Space	Full Carbon
<b>SPINNAKER Light Runner</b>	198	Trirad	Superkote 75
<b>SPINNAKER Runner</b>	198	Trirad	Maxikote 75

### Cruising

Mainsail Full Batten  
 Furling Genoa  
 Genoa Yankee (Storage in Italy)  
 2 Gennaker

### EQUIPMENT NOTE – UPDATE 2014-2015

1. New Furling Staysail/Reckmann
2. New Staysail/ Spectra

3. New Lateral/Vertical Rod Rigging
4. Radar Furuno
5. Watermaker – Total revised & New Membrane
6. Eolic Generator d400
7. Tender ZODIAC 240
8. Outboard Suzuki 6Hp
9. New Interior Canvas
10. Anchor CQR 28kg
11. Bimini, Sprayhood new
12. Battery 12v new
13. New Halyards /spectra
14. New Engine Eberspacher

Price may be changed without notice | Boat is offered subject to still being available |  
The particulars are believed to be correct but not guaranteed



Nautor's Swan Brokerage  
Unit 6, Buliding D, Swanwick Marina  
Swanwick| SO31 1ZL| United Kingdom  
+ 44 (0) 1489 854850 | [Ross.collingwood@nautorswan.com](mailto:Ross.collingwood@nautorswan.com)